



MAKING A DIFFERENCE FOR EVERY BUSINESS



Copilot+PC

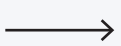


Intel® Core™
Ultra 7 processor

WE ARE DYNABOOK WITH A LEGACY



1985



2025



Dynabook carry forward Toshiba's legacy of laptop innovation since 1985. Designed for today, it blends style, speed, and durability for unmatched productivity on the move.



YOUR PRODUCTIVITY, OUR MISSION.

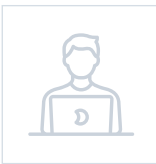
With Dynabook, you can enjoy greater work productivity with:

- World-class quality and reliability
- Service and support from industry experts
- Intelligent design with smart features
- The right technologies at the right time
- Advanced computing for business success



WE ARE ALL ABOUT MAKING A DIFFERENCE

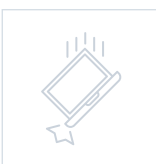
At Dynamabook, we are proud to be different to make a difference. With a deep culture of innovation - think 140 years of experience in inventing new solutions, and over 40 years of laptop design, engineering and development, we offer unrivalled expertise and know-how.



Everything made in-house - When it comes to products for you, we prefer complete control. This is why we design, develop and engineer all our business laptops in our factory with high precision and craftsmanship, so you can enjoy lasting quality assurance.



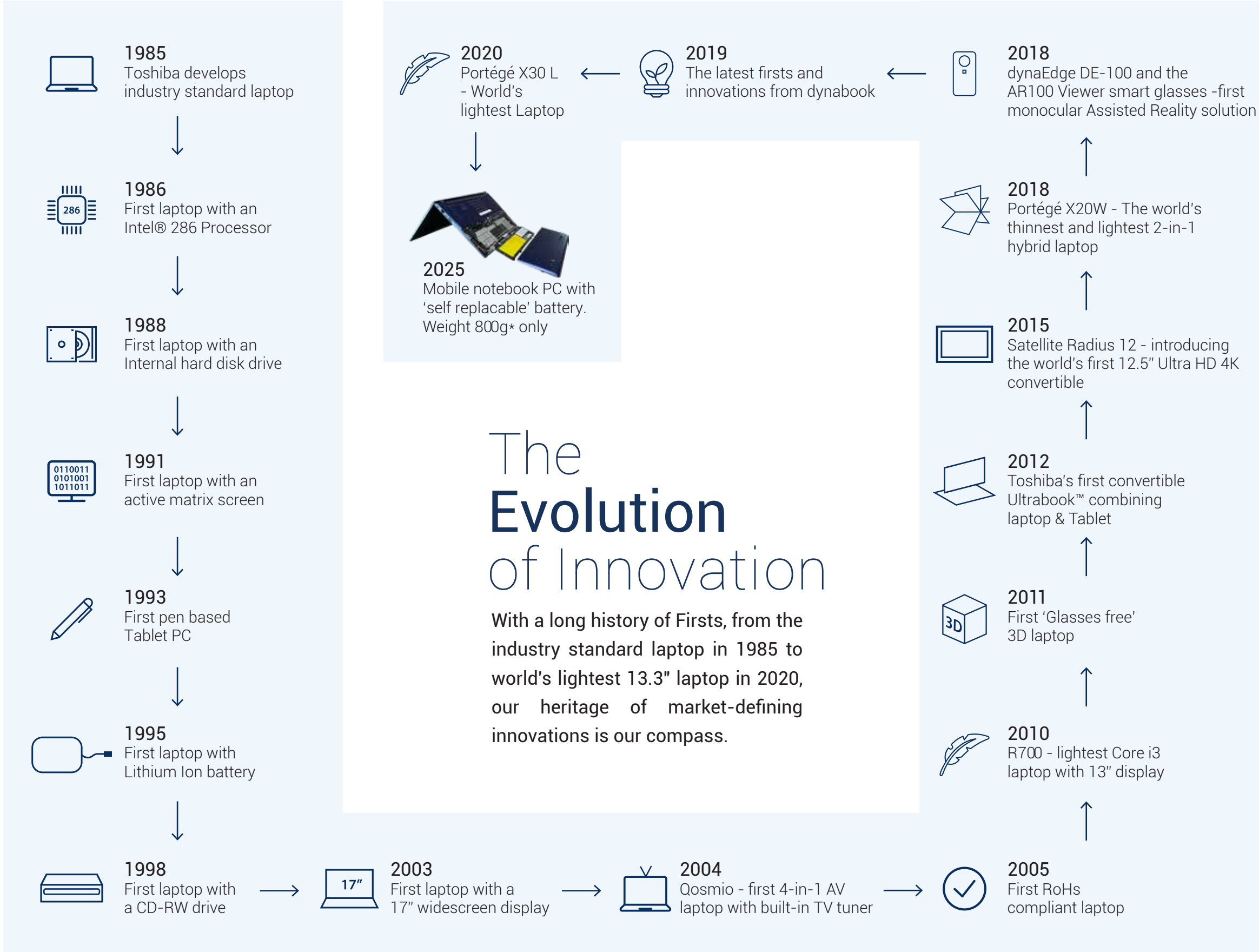
Comprehensive security controls - Data security is a valuable commodity in any business. From our own native system BIOS and secure multi-point login to bespoke Smart Data Encryption and Mobile Zero Client solutions, we work hard to prevent your data from falling into the wrong hands.



Durability is always top of mind - To withstand everyday bumps and spills, our products are subjected to rigorous testing such as the Highly Accelerated Life Test (HALT), performed by independent test institute TÜV Rheinland. Only those that pass our strict tests will find their way to your home or office.



Manageability at your fingertips - With common software image power accessories and docking across most models, you can manage your fleet of different business laptops with simplicity and efficiency.



BUSINESS PREMIUM

PORTÉGÉ X30W-M

Freedom and Flexibility Powering Productivity

When success hinges on adaptability, the ultra-thin and lightweight Portégé X30W-M combines versatility with power. Seamlessly switching between laptop and tablet modes, it empowers smarter workflows, inspires creativity, and maximises productivity wherever you are.



Ultra Slim
17.9 mm

Lightest 2-in-1 Convertible from
979 grams

360°
convertible

13.3"
Display with
Magnesium
Alloy Chassis



AI-Powered Copilot Key
Streamlines tasks and launch apps
with voice or text commands.



FHD AI-Enhanced Camera
AI-enhanced webcam, dual
microphones, and upgraded audio
system improve collaboration.



AI Noise Reduction
Filters background noise
for clear, focused audio



AI Enhanced 2.0 FHD
front-facing webcam
for clear video quality



Windows Ink® provides
a high-performance
canvas for creativity



Harman Kardon®
stereo speakers for
superior audio sound



Tested to
MIL-STD-810H for
superior durability



Comprehensive suite of
ports with HDMI 2.1,
built-in USB-C to Type C
ports with Thunderbolt™ 4



Dynabook's own BIOS,
TPM 2.0 & fingerprint
reader for boosted
security



Intel® Arc™
Graphics



Intel® Core™
Ultra 7 processor



Specifications

PROCESSOR	Intel® Core™ Ultra 5 135H (1.7GHz, up to 4.6GHz, 14 Cores (4P+8E+2LPE), 18MB Cache) Intel® Core™ Ultra 7 155H (1.4GHz, up to 4.8GHz, 16 Cores (6P+8E+2LPE), 24MB Cache) Intel® Core™ Ultra 7 165H (1.4GHz, up to 5.0GHz, 16 Cores (6P+8E+2LPE), 24MB Cache)
OPERATING SYSTEM	Windows 11 Pro
MEMORY	Choice of 8GB/16GB/32GB, up to 32GB OnBoard Technology: LPDDR5X RAM (6400 MHz)
STORAGE	Choice of 256GB/512GB/1TB/2TB NVM M.2 PCIe Gen4 Solid State Drive
DISPLAY	13.3" Full HD Anti-Glare (400nits) with Touchscreen, IPS-Technology (Capacitive) and Corning® Gorilla® Glass NBT™, resolution 1,920 x 1,080 Universal Stylus Pen with Wacom AES 2.0 Pen Technology and pen holder bundled
GRAPHICS ADAPTER [^]	Intel® Arc™ Graphics
SOUND SYSTEM	Harman Kardon® speaker system supported by Dolby Atmos® technology + AI-assisted noise reduction
KEYBOARD	Frameless full-size tile backlit keyboard with Microsoft Copilot key
POINTING DEVICE	ClickPad with multi-gesture support or SecurePad™ with Fingerprint
COMMUNICATION	Intel® Wi-Fi 6E Dual Band Wireless LAN (802.11ax), Bluetooth® 5.3
PORTS	2 x USB 3.2 Gen2 Type-C ports with Thunderbolt™ 4 which supports data transfer, power delivery and display port, 1 x USB 3.2 Gen1 Type-A (1x Support Sleep & Charge) , 1 x HDMI 2.1 (up to 4K/60Hz), 1x external headphone (stereo)/microphone combo socket), 1x microSD™ card slot
WEBCAM / MICROPHONE	2.0MP FHD Web Camera with Dual-Array Microphone and camera shutter slider, Infrared IR camera for Windows Hello™ face sign-in, supporting AI features for enhanced video and audio conferencing) 8MP Full HD world facing Camera with Touch Auto Focus
AC ADAPTOR	65W 3-pin USB-C AC Adaptor
BATTERY TYPE	4-cell, 53Whr Lithium-Ion Polymer (not user replaceable). Quick charge technology (30 minutes charge = 4 hours of battery)
SECURITY FEATURES	Fingerprint Reader, IR camera with face authentication, Advanced Encryption (TPM 2.0), slot for Secure Cable Lock, Webcam Shutter Slider, Windows Hello support, Intel® Authenticate support, user password, supervisor password, SSD password on request, Dynabook BIOS, Microsoft Secured-Core PC Certified
SPECIAL FEATURES	360-degree hinge. Magnesium Alloy chassis, incredibly light and robust Rigorously tested up to MIL-STD-810H military standards: drop test, dust test, humidity, temperature, shock
PHYSICAL DESCRIPTION	303.9 x 197.4 x 17.9mm Weight: Starting from 979g
WARRANTY ⁺	3-year International Limited Warranty (carry-in), 3 years India Onsite Warranty, 1 year ADP, 1 year Battery and Adapter.
REGULATORY / ENVIRONMENTAL SPECIFICATIONS	EPEAT® Gold Rated, ENERGY STAR Certified, RoHS compliant

^{*}Actual product features and specifications depend on model and local availability. For more information, please visit <http://asia.dynabook.com>

⁺Dynabook’s standard limited warranty terms and limitations apply. For more details, please visit <https://asia.dynabook.com/warrantylaptop/>

[^]Microsoft Copilot: Feature availability varies by market for the devices that have the Copilot in Windows icon, see aka.ms/WindowsAIFeatures

[^]Intel Arc™ Graphics excludes 8GB configuration

Optional Accessories

- PS0120LA1PRP – Dynabook Thunderbolt 4 Dock
 - PA5356L-2PRP – Dynabook USB-C Dock
- PS0001UA1PRP – Dynabook USB-C to HDMI/VGA/LAN/USB3.0 Travel Adapter
 - PA5352E-1AC3 – Dynabook USB-C AC Adaptor 65W

BUSINESS PREMIUM

PORTÉGÉ X30L-M

ULTRA-LIGHT AI EXCELLENCE

Designed for the modern professional, the Portégé X30L-M combines featherlight portability with robust performance and AI-driven features to support peak productivity in any work setting.

**Lightest AI-Powered
Dynabook Laptop**

**Ultrathin
17.7 mm**


From **875 grams**

13.3"
WUXGA Display
with Magnesium
Alloy Chassis



AI-Powered Copilot Key

Streamlines tasks and launch apps with voice or text commands.



FHD AI-Enhanced Camera

AI-enhanced webcam, dual microphones, and upgraded audio system improve collaboration.



AI Noise Reduction

Filters background noise for clear, focused audio.



Intel® Core™ Ultra processors for powerful performance



Intel® Arc™ graphics for exceptional visuals



Comprehensive suite of ports with HDMI, RJ-45, USB-C to Type-C ports with Thunderbolt™ 4



Tested to MIL-STD-810H for superior durability



EPEAT® Rated, ENERGY STAR® Qualified and RoHS compatible. An eco-friendly choice without sacrificing performance



dynabook's own BIOS, TPM 2.0 & fingerprint reader for boosted security



Intel® Arc™ Graphics



Intel® Core™ Ultra 7 processor



Specifications

PROCESSOR	Intel® Core™ Ultra 5 125U (1.3GHz, up to 4.3GHz, 12 Cores (2P+8E+2LPE), 12MB Cache) Intel® Core™ Ultra 5 135U (1.6GHz, up to 4.4GHz, 12 Cores (2P+8E+2LPE), 12MB Cache) Intel® Core™ Ultra 7 155U (1.7GHz, up to 4.8GHz, 12 Cores (2P+8E+2LPE), 12MB Cache) Intel® Core™ Ultra 7 165U (1.7GHz, up to 4.9GHz, 12 Cores (2P+8E+2LPE), 12MB Cache) Intel® Core™ Ultra 5 135H (1.7GHz, up to 4.6GHz, 14 Cores (4P+8E+2LPE), 18MB Cache) Intel® Core™ Ultra 7 155H (1.4GHz, up to 4.8GHz, 16 Cores (6P+8E+2LPE), 24MB Cache) Intel® Core™ Ultra 7 165H (1.4GHz, up to 5.0GHz, 16 Cores (6P+8E+2LPE), 24MB Cache)
OPERATING SYSTEM	Windows 11 Pro
MEMORY	Choice of 8GB/16GB/32GB, up to 32GB OnBoard (H28 Processor) and up to 64GB OnBoard (U15 Processor) Technology: LPDDR5X RAM (6400 MHz)
STORAGE	Choice of 256GB/512GB/1TB/2TB NVMe™ M.2 PCIe Gen4 Solid State Drive
DISPLAY	13.3" WUXGA (16:10) Anti-Glare (400nits), IPS-Technology, resolution 1,920 x 1,200 13.3" WUXGA (16:10) Anti-Glare (300nits) with Touchscreen, IPS-Technology, resolution 1,920 x 1,200
GRAPHICS ADAPTER^	Intel® Arc™ Graphics (H28 processor) or Intel® Graphics (U15 processor)
SOUND SYSTEM	Stereo speakers enhanced with DTS® Audio Processing + AI-assisted noise reduction
KEYBOARD	Frameless full-size tile Spill-resistant backlit keyboard with Microsoft Copilot key
POINTING DEVICE	ClickPad with multi-gesture support
COMMUNICATION	Intel® Wi-Fi 6E Dual Band Wireless LAN (802.11ax), Bluetooth® 5.3 Intel® Ethernet Connection i219 (10/100/1000Mbps)
PORTS	2 x USB Type-C ports with Thunderbolt™ 4 which supports data transfer, power delivery and display port, 2x USB 3.2 Gen1 Type-A (1 x supporting USB Sleep & Charge), 1x Gigabit LAN, 1 x HDMI2.0 -out supporting 1080p signal format, 1x external headphone (stereo/microphone combo socket), 1x microSD™ card slot
WEBCAM / MICROPHONE	2.0MP FHD Web Camera with Dual-Array Microphone and camera shutter slider Infrared IR camera for Windows Hello™ face sign-in, supporting AI features for enhanced video and audio conferencing)
AC ADAPTOR	65W 3-pin USB-C AC Adaptor
BATTERY TYPE	4-cell, 56Whr Lithium-Ion Polymer (not user replaceable). Quick charge technology (30 minutes charge = 4 hours of battery)
SECURITY FEATURES	Fingerprint Reader (integrated in the power button), IR camera with face authentication, SmartCard Reader (Optional), Advanced Encryption (TPM 2.0), slot for Secure Cable Lock, Webcam Shutter Slider, Windows Hello support, Intel® Authenticate support, user password, supervisor password, SSD password on request, Dynabook BIOS, Microsoft Secured-Core PC Certified
SPECIAL FEATURES	180-degree hinge. Magnesium Alloy chassis, incredibly light and robust Rigorously tested up to MIL-STD-810H military standards: drop test, dust test, humidity, temperature, shock
PHYSICAL DESCRIPTION	298.8 x 212 x 17.7/18.7mm Weight: From 875g
WARRANTY*	3-year International Limited Warranty (carry-in), 3 years India Onsite Warranty, 1 year ADP, 1 year Battery and Adapter.
REGULATORY / ENVIRONMENTAL SPECIFICATIONS	EPEAT® Gold Rated, ENERGY STAR Certified, RoHS compliant

*Actual product features and specifications depend on model and local availability. For more information, please visit <http://asia.dynabook.com>
*Dynabook's standard limited warranty terms and limitations apply. For more details, please visit <https://asia.dynabook.com/warrantylaptop/>
Product would be available in India after BIS certification.

Optional Accessories

- PS0120LA1PRP – Dynabook Thunderbolt 4 Dock
 - PA5356L-2PRP – Dynabook USB-C Dock
- PS0001UA1PRP – Dynabook USB-C to HDMI/VGA/LAN/USB3.0 Travel Adapter
 - PA5352E-1AC3 – Dynabook USB-C AC Adaptor 65W

BUSINESS PREMIUM

PORTÉGÉ Z40L-N

AI-Ready Performance Built for Business Mobility

Designed for the AI era, the ultra-light Portégé Z40L-N brings advanced productivity and mobility to today's professionals. Powered by Intel® Core™ Ultra processors with on-chip NPU, it easily handles demanding workflows, extended meetings, and multitasking. As a Copilot+ PC with enterprise-grade security, the Portégé Z40L-N keeps up, wherever work takes you.



Starting from
875 grams



Ultra slim **18.9 mm**
(Non-touch) / 19.9 mm (Touch)



**Business-First AI Laptop
with Self-replaceable battery**



14.0"
WUXGA Display
(Touch optional)
with Magnesium
Alloy Chassis



Copilot+PC



Intel® Core™
Ultra 7 processor



Powerful intel® Core™ Ultra V
processor (Series 2) with an
advanced integrated NPU
for enhanced AI functionality



Microso Copilot+
integration for streamlined
AI-driven task management



A local generative AI chatbot
for quick document
translation, summarisation
and note generation with
enhanced data security



AI-powered Human Presence
Detection features for
enhanced data security



AI-enabled hand gesture
control for intuitive
operation of key functions



Adaptive system
optimisation ensures
up to 8 hours of online
meetings without
recharging



Minimise downtime by
swapping out the battery
without replacing the device



Specifications

PROCESSOR	Intel® Core™ Ultra 5 226V (2.1GHz, up to 4.5GHz, 8 Cores (4P+4LPE), 8MB Cache, 40 PTOPS) Intel® Core™ Ultra 5 236V vPRO (2.1GHz, up to 4.7GHz, 8 Cores (4P+4LPE), 8MB Cache, 40 PTOPS) Intel® Core™ Ultra 7 258V (2.2GHz, up to 4.8GHz, 8 Cores (4P+4LPE), 12MB Cache, 47 PTOPS) Intel® Core™ Ultra 7 268V vPRO (2.2GHz, up to 5.0GHz, 8 Cores (4P+4LPE), 12MB Cache, 48 PTOPS)
OPERATING SYSTEM	Windows 11 Pro Next Gen
MEMORY	16GB LPDDR5X-8533 (Built into CPU), Dual-channel 32GB LPDDR5X-8533 (Built into CPU), Dual-channel
STORAGE	Choice of 256GB/512GB/1TB/2TB NVMe™ M.2 PCIe Gen4 Solid State Drive
DISPLAY	14.0" WUXGA (16:10) Anti-Glare (400NIT), IPS-Technology, resolution 1,920 x 1,200, Eyesafe® Display Certified 14.0" WUXGA (16:10) Anti-Glare (300nits) with Touchscreen, IPS-Technology, resolution 1,920 x 1,200
GRAPHICS ADAPTER^	Intel® Arc™ 130V GPU (8GB) Intel® Arc™ 140V GPU (16GB)
SOUND SYSTEM	Stereo speaker system supported by Dolby Atmos® technology+ AI-assisted noise reduction
KEYBOARD	Frameless full-size tile backlit spill-resistant keyboard with Microsoft Copilot key
POINTING DEVICE	TouchPad with multi-gesture support
COMMUNICATION	Intel® Wi-Fi7 Dual Band Wireless LAN (802.11be), Bluetooth® 5.4 Intel® Ethernet Connection i219 (10/100/1000Mbps)
PORTS	2 x USB4 Type-C™ Gen 2 - Thunderbolt 4 port which supports data transfer, power delivery and display port , 2x USB 3.2 Type-A (1xSleep & Charge), 1Gbps LAN (RJ-45), HDMI 2.1 (up to 4K/60Hz), headphone/microphone combo, microSD Card reader
WEBCAM / MICROPHONE	Built-in 5.0MP Web Camera with Dual Microphone, Infrared IR camera for Windows Hello™ face sign-in and with Human Presence Detection (HPD) features, camera shutter
AC ADAPTOR	65W 3-pin USB-C AC Adaptor
BATTERY TYPE	4-cell, 56Whr Lithium-Ion Polymer (user replaceable). Quick charge technology (30 minutes charge = 4 hours of battery)
SECURITY FEATURES	Fingerprint Reader, IR camera with face authentication, Advanced Encryption (TPM 2.0), slot for Secure Cable Lock, Webcam Shutter Slider, Windows Hello support, Intel® Authenticate support, user password, supervisor password, SSD password on request, Dynabook BIOS, Microsoft Secured-Core PC Certified (vPRO models)
SPECIAL FEATURES	180 degree hinge. Magnesium Alloy chassis, incredibly light and robust Rigorously tested up to MIL-STD-810H military standards: drop test, dust test, humidity, temperature, shock
PHYSICAL DESCRIPTION	Non-Touch: 312.4 x 222.5 x 18.7/18.9mm, starting from 960g Touch: 312.4 x 222.5 x 18.7/19.9mm, starting from 1.08kg
WARRANTY+ (TERMS & CONDITIONS APPLIES)	3-year International Limited Warranty (carry-in), 3 years India Onsite Warranty, 1 year ADP, 1 year Battery and Adapter.
REGULATORY / ENVIRONMENTAL SPECIFICATIONS	EPEAT® Gold Rated, ENERGY STAR Certified, RoHS compliant

*Actual product features and specifications depend on model and local availability. For more information, please visit <http://asia.dynabook.com>
*Dynabook’s standard limited warranty terms and limitations apply. For more details, please visit <https://asia.dynabook.com/warrantylaptop/>
^Microsoft® Copilot Key: Copilot in Windows requires an internet connection and a Microsoft« account. Availability and functionality may vary based on region and device configuration.
+AI Disclaimer Link: For more details on AI capabilities and limitations, visit: www.microsoft.com/copilot-disclaimer.
Product would be available in India after BIS certification.

Optional Accessories

- PS0120LA1PRP – Dynabook Thunderbolt 4 Dock
 - PA5356L-2PRP – Dynabook USB-C Dock
- PS0001UA1PRP – Dynabook USB-C to HDMI/VGA/LAN/USB3.0 Travel Adapter
 - PA5352E-1AC3 – Dynabook USB-C AC Adaptor 65W

BUSINESS PREMIUM

PORTÉGÉ X40L-M

Experience AI-powered efficiency and performance with the Portégé X40L-M

Discover the ultimate in AI-powered computing with the new PORTEGÉ X40L-M. Experience top-notch performance, sleek design, and advanced AI features that take your productivity to new heights.

Lightest
14"



Ultrathin
15.9 mm



From
1.05 kg



Microsoft Copilot
AI Copilot streamlines tasks with voice or text commands, enhancing efficiency and device navigation.



AI Enhanced Camera
AI features ensure clear visuals with background blurring and eye contact adjustments for an elevated video conferring experience.



Unrivalled Performance
The Intel® EVO™ platform, powered by Intel® Core Ultra processor.



Eyesafe® display filters HEV blue light reduces eye strain



dynabook's own BIOS, TPM 2.0 & fingerprint reader for boosted security



Tested to MIL-STD-810H for superior durability



Integrated dual-array microphones with AI Noise Reduction improves call quality



HDMI 2.0, built-in RJ45, USB 3.2 to Type-C ports with Thunderbolt™ 4



4 speaker system enhanced with Dolby Atmos sound technology



Specifications

PROCESSOR	Intel® Core™ Ultra 5 125H (up to 4.5GHz, 14 Cores (4P+8E+2LPE), 18MB Cache, (11 NPU TOPS) Intel® Core™ Ultra 5 135H (up to 4.6GHz, 14 Cores (4P+8E+2LPE), 18MB Cache, (11 NPU TOPS) Intel® Core™ Ultra 7 155H (up to 4.8GHz, 16 Cores (6P+8E+2LPE), 24MB Cache, 11 NPU TOPS) Intel® Core™ Ultra 7 165H (up to 5.0GHz, 16 Cores (6P+8E+2LPE), 24MB Cache, 11 NPU TOPS) Intel® Core™ Ultra 5 225H (up to 4.9GHz, 14 Cores (4P+8E+2LPE), 18MB Cache, (13 NPU TOPS) Intel® Core™ Ultra 5 235H (up to 5.0GHz, 14 Cores (4P+8E+2LPE), 18MB Cache, (13 NPU TOPS) Intel® Core™ Ultra 7 255H (up to 5.1GHz, 16 Cores (6P+8E+2LPE), 24MB Cache, (13 NPU TOPS) Intel® Core™ Ultra 7 265H (up to 5.3GHz, 16 Cores (6P+8E+2LPE), 24MB Cache, (13 NPU TOPS)
OPERATING SYSTEM	Windows 11 Pro
MEMORY	Choice of 16GB/32GB OnBoard LPDDR5X RAM 6400 MHz Choice of 16GB/32GB/64GB OnBoard LPDDR5X RAM 6400 MHz (64GB available on selected models)
STORAGE	Choice of 256GB/512GB/1TB/2TB NVM M.2 PCIe Gen4 Solid State Drive
DISPLAY	14.0 WUXGA 16:10 (400NIT), resolution 1,920 x 1,200 with Eyesafe® Display Certifie
GRAPHICS ADAPTER^	Intel® Arc™ Graphics Intel® Arc™ 130T Graphics (225H CPU), Intel® 140T Graphics or Intel® Graphics
SOUND SYSTEM	4 speaker system® supported by Dolby Atmos® technology
KEYBOARD	Frameless Full-Size Backlit Spill Resistant Keyboard
POINTING DEVICE	ClickPad with multi-gesture support
COMMUNICATION	Intel® Wi-Fi 6E Dual Band Wireless LAN (802.11ax) and Bluetooth® 5.3 Intel® Ethernet Connection i219 (10/100/1000Mbps) Intel® Wi-Fi 6E Dual Band Wireless LAN (802.11ax) and Bluetooth® 5.3 Intel® WiFi 7 Dual Band Wireless LAN (802.11be) and Bluetooth® 5.4 Intel® Ethernet Connection i219 (10/100/1000Mbps)
PORTS	2 x USB 3.2 Gen2 Type-C ports with Thunderbolt™ 4 which supports data transfer, power delivery and display port, 2 x USB 3.2 Gen1 Type-A (1x Support Sleep & Charge), 1 x HDMI 2.1 (up to 4K/60Hz), 1x external headphone (stereo)/microphone combo socket), 1x microSD™ card slot
WEBCAM / MICROPHONE	HD-camera or HD plus IR- user-facing camera for Windows Hello (face authentication) and AI features to enhance privacy and video quality. 360-degree dual microphones including AI features for Noise Reduction 2.0MP FHD-camera or plus IR- user-facing camera for Windows Hello (face authentication) and AI features to enhance privacy and video quality. 360-degree dual microphones including AI features for Noise Reduction
AC ADAPTOR	65W USB Type-C AC Adaptor
BATTERY TYPE	4-cell, 65Whr Lithium-Ion Polymer (not user replaceable) Quick charge technology (30 minutes charge = 4 hours of battery)
SECURITY FEATURES	Fingerprint Reader (integrated in the power button), IR camera with face authentication (Optional), Advanced Encryption (TPM 2.0), slot for Secure Cable Lock, Webcam Shutter Slider, Windows Hello support, Intel® Authenticate support, user password, supervisor password, SSD password on request, Dynabook BIOS, Microsoft Secured-Core PC
SPECIAL FEATURES	Magnesium Alloy Chassis. 180 degree hinge. Windows Studio Effects for AI Camera enhancements. Rigorously tested up to MIL-STD-810H military standards: drop test, dust test, humidity, temperature, shock
PHYSICAL DESCRIPTION	312.4 x 224 x 15.9mm Weight: Starting from 1.05kg (Weight may vary by configurations. Does not include power adapter)
WARRANTY+	3-year International Limited Warranty (carry-in), 3 years India Onsite Warranty, 1 year ADP, 1 year Battery and Adapter.
REGULATORY / ENVIRONMENTAL SPECIFICATIONS	EPEAT® Gold Registered, ENERGY STAR 8.0, RoHS compliant

* Actual product features and specifications depend on model and local availability. For more information, please visit <http://asia.dynabook.com>

¹ Intel® Arc™ Graphics only available on select H-series Intel Core Ultra processor powered systems with at least 16GB of system memory in a dual-channel configurations, otherwise it will function as Intel Graphics

² Microsoft Copilot: Feature availability varies by market for the devices that have the Copilot in Windows icon, see aka.ms/WindowsAIFeatures

³ Wi-Fi 7 operation is subject to the regulation rules in each country.

⁴ Dynabook’s standard limited warranty terms and limitations apply. For more details, please visit <https://asia.dynabook.com/warrantylaptop/>

- Optional Accessories
- PS0120LA1PRP - Dynabook Thunderbolt 4 Dock

• PA5356E-2PRP - Dynabook USB-C Dock

• PS0001UA1PRP - Dynabook USB-C to HDMI/VGA/LAN/USB3.0 Travel adapter

• PA5352E-1AC3 - Dynabook USB-C AC Adapter 65W

BUSINESS PREMIUM

PORTÉGÉ X40-M

Premium Performance Powered by AI

Maximising productivity for work professionals

Experience unmatched productivity with the Portégé X40-M: a sleek 14-inch laptop with Intel® Core™ Ultra processors and cutting-edge AI, designed to elevate your professional performance.



14" WUXGA Display
with Aluminum Alloy Chassis



Ultrathin
18.6 mm



From
1.38 kg



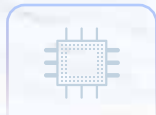
Empowered with AI Copilot

Streamline tasks using voice or text commands, optimising workflows and simplifying device navigation.



5MP AI-Enhanced Camera

AI-enhanced webcam, dual microphones, and upgraded audio system improve collaboration.



Intel® Core™
Ultra processors for
powerful performance



Intel® Arc™
graphics for
exceptional visuals



Integrated dual-array
microphones with
AI Noise Reduction
helps improve
overall call quality



Tested to
MIL-STD-810H for
superior durability



Comprehensive suite of
ports with HDMI 2.0,
built-in USB-C to Type-C
ports with Thunderbolt™ 4



dynabook's own BIOS,
TPM 2.0 & fingerprint
reader for boosted
security



Intel® Arc™
Graphics



Intel® Core™
Ultra 7 processor



Specifications

PROCESSOR	Intel® Core™ Ultra 5 125U (up to 4.3GHz, 12 Cores (2P+8E+2LPE), 12MB Cache, 11 NPU TOPS) Intel® Core™ Ultra 5 135U (up to 4.4GHz, 12 Cores (2P+8E+2LPE), 12MB Cache, 11 NPU TOPS) Intel® Core™ Ultra 7 155U (up to 4.8GHz, 12 Cores (2P+8E+2LPE), 12MB Cache, 11 NPU TOPS) Intel® Core™ Ultra 7 165U (up to 4.9GHz, 12 Cores (2P+8E+2LPE), 12MB Cache, 11 NPU TOPS) Intel® Core™ Ultra 5 135H (up to 4.6GHz, 14 Cores (4P+8E+2LPE), 18MB Cache, (11 NPU TOPS) Intel® Core™ Ultra 7 155H (up to 4.8GHz, 16 Cores (6P+8E+2LPE), 24MB Cache, 11 NPU TOPS) Intel® Core™ Ultra 7 165H (up to 5.0GHz, 16 Cores (6P+8E+2LPE), 24MB Cache, 11 NPU TOPS) Intel® Core™ Ultra 5 225U (up to 4.8GHz, 12 Cores (2P+8E+2LPE), 12MB Cache, 12 NPU TOPS) Intel® Core™ Ultra 5 235U (up to 4.9GHz, 12 Cores (2P+8E+2LPE), 12MB Cache, 12 NPU TOPS) Intel® Core™ Ultra 7 255U (up to 5.2GHz, 12 Cores (2P+8E+2LPE), 12MB Cache, 12 NPU TOPS) Intel® Core™ Ultra 7 265U (up to 5.3GHz, 12 Cores (2P+8E+2LPE), 12MB Cache, 12 NPU TOPS) Intel® Core™ Ultra 5 235H (up to 5.0GHz, 14 Cores (4P+8E+2LPE), 18MB Cache, (13 NPU TOPS) Intel® Core™ Ultra 7 255H (up to 5.1GHz, 16 Cores (6P+8E+2LPE), 24MB Cache, 13 NPU TOPS) Intel® Core™ Ultra 7 265H (up to 5.3GHz, 16 Cores (6P+8E+2LPE), 24MB Cache, 13 NPU TOPS)
OPERATING SYSTEM	Windows 11 Pro
MEMORY	Choice of 8GB/16GB/32GB, maximum expandability: 64GB, two Configurable slots Technology: DDR5 (5600 MHz)
STORAGE	Choice of 256GB/512GB NVMe™ M.2 PCIe Gen3 Solid State Drive or 512GB/1TB/2TB NVMe™ M.2 PCIe Gen4 Solid State Drive
DISPLAY	14.0" WUXGA (16:10) Anti-Glare (300nits), IPS-Technology, resolution 1,920 x 1,200 14.0" WUXGA (16:10) Anti-Glare (300nits) with Touchscreen, IPS-Technology, resolution 1,920 x 1,200
GRAPHICS ADAPTER^	Intel® Arc™ Graphics or Intel® Graphics
SOUND SYSTEM	Stereo speakers with DTS® Audio Processing + AI-assisted noise reduction
KEYBOARD	Frameless full-size tile Spill-resistant backlit keyboard with Microsoft Copilot key
POINTING DEVICE	ClickPad with multi-gesture support
COMMUNICATION	Intel® Wi-Fi 6E Dual Band Wireless LAN (802.11ax), Bluetooth® 5.3 Intel® Ethernet Connection i219 (10/100/1000Mbps)
PORTS	2 x USB Type-C ports with Thunderbolt™ 4 which supports data transfer, power delivery and display port, 2x USB 3.1 (1 x supporting power off and charge), 1x Gigabit LAN, 1 x HDMI2.0 -out supporting 1080p signal format, 1x external headphone (stereo/microphone combo socket), 1x microSD™ card slot, 1x DC-in
WEBCAM / MICROPHONE	5.0MP Web Camera with Dual-Array Microphone and camera shutter slider Optional Infrared IR camera for Windows Hello™ face sign-in, supporting AI features for enhanced video and audio conferencing)
AC ADAPTOR	65W 3-pin USB-C AC Adaptor
BATTERY TYPE	4-cell, 60Whr Lithium-Ion Polymer (not user replaceable). Quick charge technology (30 minutes charge = 4 hours of battery)
SECURITY FEATURES	Fingerprint Reader, Smartcard reader (Optional), IR camera with face authentication (Optional), Advanced Encryption (TPM 2.0), slot for Secure Cable Lock, Webcam Shutter Slider, Windows Hello support, Intel® Authenticate support, user password, supervisor password, SSD password on request, Dynabook In-house Developed BIOS, Microsoft Secured-Core PC certified
SPECIAL FEATURES	Aluminum Alloy Chassis. 180 degree hinge. Windows Studio Effects for AI Camera enhancements. Rigorously tested up to MIL-STD-810H military standards: drop test, dust test, humidity, temperature, shock
PHYSICAL DESCRIPTION	313.2 x 221.75 x 18.6mm Weight: Starting from 1.38kg
WARRANTY*	3-year International Limited Warranty (carry-in), 3 years India Onsite Warranty, 1 year ADP, 1 year Battery and Adapter.
REGULATORY / ENVIRONMENTAL SPECIFICATIONS	EPEAT® Gold Rated, ENERGY STAR® Qualified, RoHS compatible

* Actual product features and specifications depend on model and local availability. For more information, please visit <http://asia.dynabook.com>
^ Intel® Arc™ Graphics only available on select H-series Intel Core Ultra processor powered systems with at least 16GB of system memory in a dual-channel configurations, otherwise it will function as Intel Graphics
+ Dynabook’s standard limited warranty terms and limitations apply. For more details, please visit <https://asia.dynabook.com/warrantylaptop/>

Optional Accessories

- PS0120LA1PRP - Dynabook Thunderbolt 4 Dock
 - PA5356L-2PRP - Dynabook USB-C Dock
- PS0001UA1PRP - Dynabook USB-C to HDMI/VGA/LAN/USB3.0 Travel adapter
 - PA5352E-1AC3 - Dynabook USB-C AC Adapter 65W

BUSINESS ENHANCED SERIES

TECRA A40-M

AI-Boosted Productivity

Versatile workhorse for professionals on the move

Meet modern workforce demands with AI-enhanced features, powerful performance, and advanced security. Empower hybrid teams with a laptop that boosts productivity and adapts to any environment.



Ultrathin
19.9 mm



From
1.39 kg



Empowered with AI Copilot

Streamline tasks using voice or text commands, optimising workflows and simplifying device navigation.

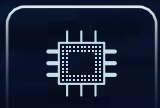


5MP AI-Enhanced Camera

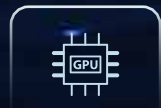
AI-enhanced webcam, dual microphones, and upgraded audio system improve collaboration.

14"
model

WUXGA
16:10
Display



Intel® Core™ Ultra
processors for
powerful
performance



Intel® Arc™
graphics for
exceptional visuals



Integrated dual-array
microphones with
AI Noise Reduction
helps improve
overall call quality



Tested to
MIL-STD-810H for
superior durability



HDMI 2.0, USB 3.1,
Type-C ports with
Thunderbolt™ 4



Microsoft Secured-core PC with
Dynabook's native BIOS, TPM
2.0 & webcam shutter slider for
boosted security



Intel® Arc™
Graphics



Intel® Core™
Ultra 7 processor



Specifications

PROCESSOR	Intel® Core™ Ultra 5 125U (up to 4.3GHz, 12 Cores (2P+8E+2LPE), 12MB Cache, 11 NPU TOPS) Intel® Core™ Ultra 5 135U (up to 4.4GHz, 12 Cores (2P+8E+2LPE), 12MB Cache, 11 NPU TOPS) Intel® Core™ Ultra 7 155U (up to 4.8GHz, 12 Cores (2P+8E+2LPE), 12MB Cache, 11 NPU TOPS) Intel® Core™ Ultra 7 165U (up to 4.9GHz, 12 Cores (2P+8E+2LPE), 12MB Cache, 11 NPU TOPS) Intel® Core™ Ultra 5 135H (up to 4.6GHz, 14 Cores (4P+8E+2LPE), 18MB Cache, (11 NPU TOPS) Intel® Core™ Ultra 7 155H (up to 4.8GHz, 16 Cores (6P+8E+2LPE), 24MB Cache, 11 NPU TOPS) Intel® Core™ Ultra 7 165H (up to 5.0GHz, 16 Cores (6P+8E+2LPE), 24MB Cache, 11 NPU TOPS) Intel® Core™ Ultra 5 225U (up to 4.8GHz, 12 Cores (2P+8E+2LPE), 12MB Cache, 12 NPU TOPS) Intel® Core™ Ultra 5 235U (up to 4.9GHz, 12 Cores (2P+8E+2LPE), 12MB Cache, 12 NPU TOPS) Intel® Core™ Ultra 7 255U (up to 5.2GHz, 12 Cores (2P+8E+2LPE), 12MB Cache, 12 NPU TOPS) Intel® Core™ Ultra 7 265U (up to 5.3GHz, 12 Cores (2P+8E+2LPE), 12MB Cache, 12 NPU TOPS) Intel® Core™ Ultra 5 235H (up to 5.0GHz, 14 Cores (4P+8E+2LPE), 18MB Cache, (13 NPU TOPS) Intel® Core™ Ultra 7 255H (up to 5.1GHz, 16 Cores (6P+8E+2LPE), 24MB Cache, 13 NPU TOPS) Intel® Core™ Ultra 7 265H (up to 5.3GHz, 16 Cores (6P+8E+2LPE), 24MB Cache, 13 NPU TOPS)
OPERATING SYSTEM	Windows 11 Pro
MEMORY	Choice of 8GB/16GB/32GB, maximum expandability: 64GB, two Configurable slots Technology: DDR5 (5600 MHz)
STORAGE	Choice of 256GB/512GB NVMe™ M.2 PCIe Gen3 Solid State Driver or 512GB/1TB/2TB NVMe™ M.2 PCIe Gen4 Solid State Drive
DISPLAY	14.0" WUXGA (16:10) Anti-Glare (300nits), IPS-Technology, resolution 1,920 x 1,200 14.0" WUXGA (16:10) Anti-Glare (300nits) with Touchscreen, IPS-Technology, resolution 1,920 x 1,200
GRAPHICS ADAPTER [^]	Intel® Arc™ Graphics or Intel® Graphics
SOUND SYSTEM	Stereo speakers with DTS® Audio Processing + AI-assisted noise reduction
KEYBOARD	Frameless full-size tile Spill-resistant keyboard with Microsoft Copilot key Optional frameless full-size tile Spill-resistant backlit keyboard with Microsoft Copilot key
POINTING DEVICE	ClickPad with multi-gesture support
COMMUNICATION	Intel® Wi-Fi 6E Dual Band Wireless LAN (802.11ax), Bluetooth® 5.3 Intel® Ethernet Connection i219 (10/100/1000Mbps)
PORTS	2 x USB Type-C ports with Thunderbolt™ 4 which supports data transfer, power delivery and display port, 2x USB 3.1 (1 x supporting power off and charge), 1x Gigabit LAN, 1 x HDMI2.0 -out supporting 1080p signal format, 1x external headphone (stereo/microphone combo socket), 1x microSD™ card slot, 1x DC-in
WEBCAM / MICROPHONE	5.0MP Web Camera with Dual-Array Microphone and camera shutter slider. Optional Infrared IR camera for Windows Hello™ face sign-in, supporting AI features for enhanced video and audio conferencing)
AC ADAPTOR	65W 3-pin AC Adaptor
BATTERY TYPE	4-cell, 60Whr Lithium-Ion Polymer (not user-replaceable). Quick charge technology (30 minutes charge = 4 hours of battery)
SECURITY FEATURES	Fingerprint Reader (Optional), Smartcard reader (Optional), IR camera with face authentication (Optional), Advanced Encryption (TPM 2.0), slot for Secure Cable Lock, Webcam Shutter Slider, Windows Hello support, Intel® Authenticate support, user password, supervisor password, SSD password on request, Dynabook In-house Developed BIOS, Microsoft Secured-Core PC certified
SPECIAL FEATURES	180-degree hinge. Windows Studio Effects for AI Camera enhancements. Rigorously tested up to MIL-STD-810H military standards: drop test, dust test, humidity, temperature, shock
PHYSICAL DESCRIPTION	313.2 x 220.9 x 19.9mm Weight: Starting from 1.39kg
WARRANTY ⁺	3-year International Limited Warranty (carry-in), 3 years India Onsite Warranty, 1 year ADP, 1 year Battery and Adapter.
REGULATORY / ENVIRONMENTAL SPECIFICATIONS	EPEAT® Gold Rated, ENERGY STAR® Qualified, RoHS compatible

*Actual product features and specifications depend on model and local availability. For more information, please visit <http://asia.dynabook.com>
[^] Intel® Arc™ Graphics only available on select H-series Intel Core Ultra processor powered systems with at least 16GB of system memory in a dual-channel configurations, otherwise it will function as Intel Graphics
⁺ Dynabook’s standard limited warranty terms and limitations apply. For more details, please visit <https://asia.dynabook.com/warrantylaptop/>

- Optional Accessories
- PS0120LA1PRP - Dynabook Thunderbolt 4 Dock

• PA5355L-2PRP - Dynabook USB-C Dock

• PS0001UA1PRP - Dynabook USB-C to HDMI/VGA/LAN/USB3.0 Travel adapter

• PA5352E-1AC3 - Dynabook USB-C AC Adapter 65W

BUSINESS ENHANCED SERIES

TECRA A60-M

Empowering Hybrid Professionals With AI-Boosted Productivity

Empower your hybrid teams with AI-driven features, blazing speed, and ironclad security. This laptop maximises productivity, effortlessly adapting to any work environment, and meeting the challenges of today's workforce.



Ultrathin
19.9 mm



From
1.66 kg



Empowered with AI Copilot

Streamline tasks using voice or text commands, optimising workflows and simplifying device navigation.



5MP AI-Enhanced Camera

AI-enhanced webcam, dual microphones, and upgraded audio system improve collaboration

16"
model

WUXGA
16:10
Display

Large
Clickpad
with Numeric
keyboard



Intel® Core™ Ultra
processors for
powerful
performance



Intel® Arc™
graphics for
exceptional visuals



Integrated dual-array
microphones with
AI Noise Reduction
helps improve
overall call quality



Tested to
MIL-STD-810H for
superior durability



HDMI 2.0, USB 3.1,
Type-C ports with
Thunderbolt™ 4



Microsoft Secured-core PC with
Dynabook's native BIOS, TPM
2.0 & webcam shutter slider for
boosted security



Intel® Arc™
Graphics



Intel® Core™
Ultra 7 processor



Specifications

PROCESSOR	Intel® Core™ Ultra 5 125U (up to 4.3GHz, 12 Cores (2P+8E+2LPE), 12MB Cache, 11 NPU TOPS) Intel® Core™ Ultra 5 135U (up to 4.4GHz, 12 Cores (2P+8E+2LPE), 12MB Cache, 11 NPU TOPS) Intel® Core™ Ultra 7 155U (up to 4.8GHz, 12 Cores (2P+8E+2LPE), 12MB Cache, 11 NPU TOPS) Intel® Core™ Ultra 7 165U (up to 4.9GHz, 12 Cores (2P+8E+2LPE), 12MB Cache, 11 NPU TOPS) Intel® Core™ Ultra 5 135H (up to 4.6GHz, 14 Cores (4P+8E+2LPE), 18MB Cache, (11 NPU TOPS) Intel® Core™ Ultra 7 155H (up to 4.8GHz, 16 Cores (6P+8E+2LPE), 24MB Cache, 11 NPU TOPS) Intel® Core™ Ultra 7 165H (up to 5.0GHz, 16 Cores (6P+8E+2LPE), 24MB Cache, 11 NPU TOPS) Intel® Core™ Ultra 5 225U (up to 4.8GHz, 12 Cores (2P+8E+2LPE), 12MB Cache, 12 NPU TOPS) Intel® Core™ Ultra 5 235U (up to 4.9GHz, 12 Cores (2P+8E+2LPE), 12MB Cache, 12 NPU TOPS) Intel® Core™ Ultra 7 255U (up to 5.2GHz, 12 Cores (2P+8E+2LPE), 12MB Cache, 12 NPU TOPS) Intel® Core™ Ultra 7 265U (up to 5.3GHz, 12 Cores (2P+8E+2LPE), 12MB Cache, 12 NPU TOPS) Intel® Core™ Ultra 5 235H (up to 5.0GHz, 14 Cores (4P+8E+2LPE), 18MB Cache, (13 NPU TOPS) Intel® Core™ Ultra 7 255H (up to 5.1GHz, 16 Cores (6P+8E+2LPE), 24MB Cache, 13 NPU TOPS) Intel® Core™ Ultra 7 265H (up to 5.3GHz, 16 Cores (6P+8E+2LPE), 24MB Cache, 13 NPU TOPS)
OPERATING SYSTEM	Windows 11 Pro
MEMORY	Choice of 8GB/16GB/32GB, maximum expandability: 64GB, two Configurable slots Technology: DDR5 (5600 MHz)
STORAGE	Choice of 256GB/512GB NVMe™ M.2 PCIe Gen3 Solid State Driver or 512GB/1TB/2TB NVMe™ M.2 PCIe Gen4 Solid State Drive
DISPLAY	16.0" WUXGA (16:10) Anti-Glare (300nits), IPS-Technology, resolution 1,920 x 1,200 16.0" WUXGA (16:10) Anti-Glare (300nits) with Touchscreen, IPS-Technology, resolution 1,920 x 1,200
GRAPHICS ADAPTER [^]	Intel® Arc™ Graphics or Intel® Graphics
SOUND SYSTEM	Stereo speakers with DTS® Audio Processing + AI-assisted noise reduction
KEYBOARD	Frameless full-size tile Spill-resistant keyboard with Numeric KeyPad and Microsoft Copilot key Optional frameless full-size tile Spill-resistant backlit keyboard with Numeric KeyPad and Microsoft Copilot key
POINTING DEVICE	ClickPad with multi-gesture support
COMMUNICATION	Intel® Wi-Fi 6E Dual Band Wireless LAN (802.11ax), Bluetooth® 5.3 Intel® Ethernet Connection i219 (10/100/1000Mbps)
PORTS	2 x USB Type-C ports with Thunderbolt™ 4 which supports data transfer, power delivery and display port, 2x USB 3.1 (1 x supporting power off and charge), 1x Gigabit LAN, 1 x HDMI2.0 -out supporting 1080p signal format, 1x external headphone (stereo/microphone combo socket), 1x microSD™ card slot, 1x DC-in
WEBCAM / MICROPHONE	5.0MP Web Camera with Dual-Array Microphone and camera shutter slider. Optional Infrared IR camera for Windows Hello™ face sign-in, supporting AI features for enhanced video and audio conferencing)
AC ADAPTOR	65W 3-pin AC Adaptor
BATTERY TYPE	4-cell, 60Whr Lithium-Ion Polymer (not user-replaceable). Quick charge technology (30 minutes charge = 4 hours of battery)
SECURITY FEATURES	Fingerprint Reader (Optional), Smartcard reader (Optional), IR camera with face authentication (Optional), Advanced Encryption (TPM 2.0), slot for Secure Cable Lock, Webcam Shutter Slider, Windows Hello support, Intel® Authenticate support, user password, supervisor password, SSD password on request, Dynabook In-house Developed BIOS, Microsoft Secured-Core PC certified
SPECIAL FEATURES	180-degree hinge. Windows Studio Effects for AI Camera enhancements. Rigorously tested up to MIL-STD-810H military standards: drop test, dust test, humidity, temperature, shock
PHYSICAL DESCRIPTION	357 x 248.85 x 19.9mm Weight: Starting from 1.66kg
WARRANTY ⁺	3-year International Limited Warranty (carry-in), 3 years India Onsite Warranty, 1 year ADP, 1 year Battery and Adapter.
REGULATORY / ENVIRONMENTAL SPECIFICATIONS	EPEAT® Gold Rated, ENERGY STAR® Qualified, RoHS compatible

*Actual product features and specifications depend on model and local availability. For more information, please visit <http://asia.dynabook.com>
[^] Intel® Arc™ Graphics only available on select H-series Intel Core Ultra processor powered systems with at least 16GB of system memory in a dual-channel configurations, otherwise it will function as Intel Graphics
⁺ Dynabook's standard limited warranty terms and limitations apply. For more details, please visit <https://asia.dynabook.com/warrantylaptop/>

Optional Accessories

- PS0120LA1PRP - Dynabook Thunderbolt 4 Dock
 - PA5355L-2PRP - Dynabook USB-C Dock
- PS0001UA1PRP - Dynabook USB-C to HDMI/VGA/LAN/USB3.0 Travel adapter
 - PA5352E-1AC3 - Dynabook USB-C AC Adapter 65W

Satellite Pro C40-K / C50-K

The Perfect Balance Between Performance and Portability

Experience seamless performance and portability with the ultraportable Satellite Pro C40/C50 series. This ultra-slim, narrow-bezel laptop is designed for stylish, efficient multitasking, featuring the latest Intel® Core processors and Windows 11 Pro.

Satellite Pro C40-K

Thin & Sleek
18.75 mm



From
1.35 kg



14"
Anti-Glare
Display

15.6"
Anti-Glare
Display



Satellite Pro C50-K

Thin & Sleek
18.95 mm



From
1.52 kg

Windows 11



Intel® Core™ 7 processor



Powered by the latest Intel Core™ processors, up to 32GB of memory and 1TB of storage



Choice of HD and FHD Anti-glare displays with narrow bezels for a comfortable viewing experience



HD webcam with camera shutter and AI-enhanced audio capabilities



Fingerprint reader for boosted security



Full ports connectivity with 4 USB ports, HDMI, and built-in LAN for collaboration anywhere



Anti-Bacterial coating to keep you safe



Lay-flat 180° hinge



Specifications

<i>Satellite Pro C40-K</i>		<i>Satellite Pro C50-K</i>
PROCESSOR	Intel® Core™ 3 Processor 100U (1.2GHz, up to 4.7GHz, 6 Cores (2P+4E), 10MB Cache) Intel® Core™ 5 processor 120U (1.4GHz upto 5.0GHz, 10 Cores (2P+8E), 12MB Cache) Intel® Core™ 7 Processor 150U (1.8GHz, up to 5.4GHz, 10 Cores (2P+8E), 12MB Cache)	
OPERATING SYSTEM	Windows 11 Pro	
MEMORY	Choice of 8GB / 16GB DDR4 (3,200 MHz) up to a maximum of 32GB (two fully configurable slots)	
HARD DISK*	Choice of 256GB, 512GB Gen 3 PCIe NVMe Solid State Drive or 1TB Gen 4 PCIe NVMe Solid State Drive	
DISPLAY	14" Full HD Anti-Glare (250NIT) IPS display, resolution 1,920 x 1,080	15.6" Full HD Anti-Glare (250NIT) IPS display, resolution 1,920 x 1,080
GRAPHICS ADAPTER^	Intel® Graphics	
SOUND SYSTEM	Stereo speakers	
KEYBOARD	Frameless matte black tiled keyboard with antibacterial coating. Dedicated conference call function keys	Frameless matte black tiled keyboard with numeric keypad, antibacterial coating. Dedicated conference call function keys
COMMUNICATION	Intel® Wi-Fi 6 Dual Band Wireless LAN (802.11ax), Bluetooth® 5.2	
INTERFACES	3x USB 3.2 Type-A, 1x USB 3.2 Type-C™ Gen 2 (supporting power delivery, data transfer and display), HDMI-out, RJ-45, headphone/microphone combo, MicroSD card reader	
BUILT-IN CAMERA / MICROPHONE	HD webcam with shutter slider and LED indicator. Infrared camera with Face Authentication (optional). Dual Mic supports beam forming and AI-powered noise reduction technology	
AC ADAPTOR	45W 100-240V/50-60Hz Universal AC Adaptor	
BATTERY TYPE	3-cell, 45Whr Lithium-Ion Polymer (not user replaceable). Quick charge technology (30 minutes charge = 4 hours of battery). Battery management eco utility for conservation of the battery lifespan	
SECURITY FEATURES	Firmware Trusted Platform Module (fTPM) 2.0, Fingerprint Reader (optional), Infrared (IR) camera for Face Authentication (optional), Camera shutter slider, Security lock slot	
PROTECTION FEATURES	180-degree hinge, Antibacterial paint coating (chassis, keyboard and Clickpad), Slim bezels (83% screen-to-body ratio)	
PHYSICAL DESCRIPTION	323.9 x 211.8 x 18.75mm Starting from 1.35kg	358.9 x 230.5 x 18.95mm Starting from 1.52kg
WARRANTY*	3 years India Onsite Warranty, 1 year ADP, 1 year Battery and Adapter.	

* Actual product features and specifications depend on model and local availability. For more information, please visit <http://asia.dynabook.com>
+ Dynabook’s standard limited warranty terms and limitations apply. For more details, please visit <https://asia.dynabook.com/warrantylaptop/>

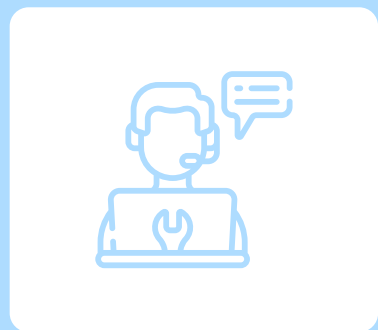
Optional Accessories

- PS0120LA1PRP - Dynabook Thunderbolt 4 Dock
 - PA5355L-2PRP - Dynabook USB-C Dock
- PS0001UA1PRP - Dynabook USB-C to HDMI/VGA/LAN/USB3.0 Travel adapter
 - PA5352E-1AC3 - Dynabook USB-C AC Adapter 65W

Dynabook Support Services

Dynabook TOTAL PROTECTION AND SUPPORT

Technical Support



Dedicated technical call centre support.

Support through email or toll free telephonic support.

Support Access



Service Support Website
<https://emea.dynabook.com/support/drivers/laptops>

Remote Support
Please refer to the ASP locator of your region or contact your Dynabook subsidiary.

Warranty Service



Authorized Service Provider

Onsite Service

Dedicated Dynabook resource available in major city

System Generated service history periodic report support

Extended Service/Support



International Onsite Service*

HDD/SSD Retention*

Accidental Damage Protection*

Battery Extension Warranty*

**Optional*

Asset Recovery Service



Assets Recycling*

Assets Resales*

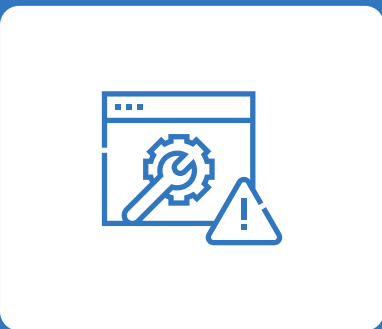
Data Sanitization*

**Optional*

End to End Support

Dynabook End to End Customer Satisfaction

Self Trouble-Shooting Support



Bios Level Diagnostic tool to check hardware failure.

Dynabook Service Station tool for windows-based diagnostic.

Battery Health Management tool Eco Utility.

Registration / Warranty and Drivers support



For Registration support
India@asiadynabook.com

Warranty Look up
<https://support.dynabook.com/warranty>

For Driver/utility
<https://emeadynabook.com/support/drivers/laptops>

Warranty / Non-Warranty Service



Authorized Service Provider
<https://ensureservices.in/location/>

Remote support.

Onsite Service.

Complete Service update / Service History Report



Call Centre based service update.

Service History Periodic Report based.



Long Term Quality Assurance

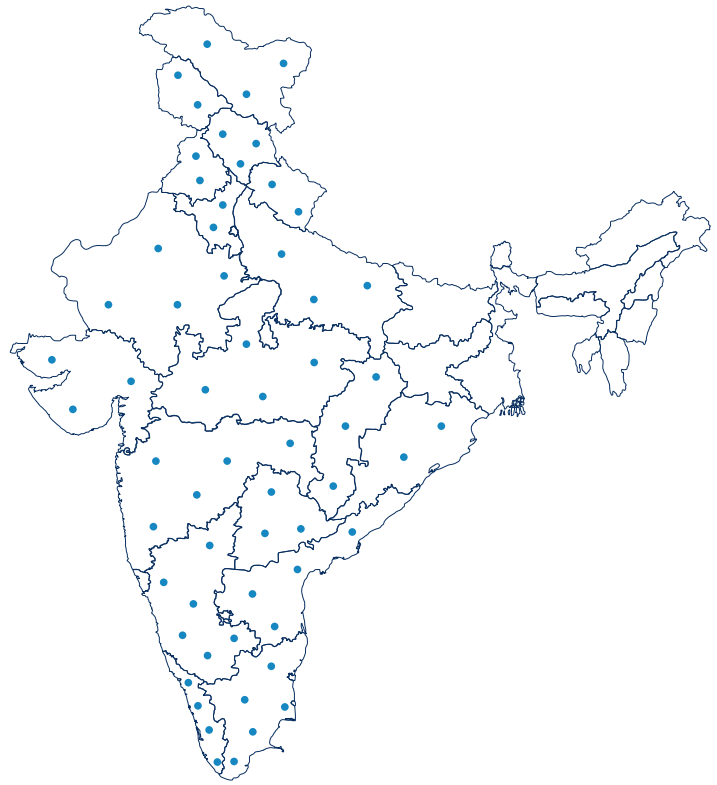


Local and Global Coverage



Support that Fits Your Needs

INTERNATIONAL WARRANTY



INDIA WARRANTY SUPPORT

Local and IDD call charges may apply

Toll Free Number - 1800 200 6768
Email ID - support-india@asiadynabook.com
Support Timings - **Monday to Saturday**
(8.00am to 8.00 pm IST) excluding Public Holidays

Onsite Warranty
in 496 Locations



Linkedin

Scan the QR code
for more details



Website

Register for laptop warranty here: <https://india.dynabook.com/warranty/>

2025 Dynabook Singapore Pte. Ltd. All rights reserved Product specifications subject to change without notice. While Dynabook has made every effort at the name of printing to the accuracy of the information provided herein, product specifications, configurations, warranty, pricing, system/component/options available are all subset of change without prior nodi Dynabook will not be liable for editorial, pictorial, and typographical errors. One Gigabyte (GB) means one billion bytes and one Terabyte Times one trillion bytes Totakinalatcie capacity will vary based on operating environment and may show less storage capacity. Some of the listed capacity is used for formatting and the functions andis not available for usage.

